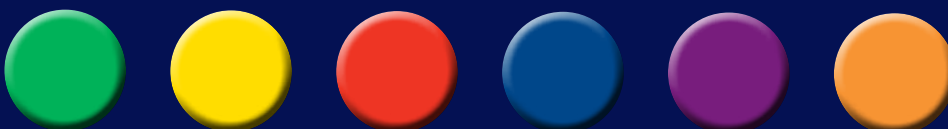




Warrnambool  
COLLEGE



# YEAR 7 INFORMATION BOOK 2025



# CONTENTS

Welcome .....	3
Key Dates .....	4
To Do List .....	4
General Information .....	5
Small Schools' Orientation Day .....	6
Statewide Orientation Day .....	7
Uniform Policy & Uniform Suppliers .....	8
Uniform Q & A .....	10
The Big Three .....	12
Attendance .....	13
Ready To Learn .....	14
Behaviour & Academic Expectations .....	15
State School Relief (CSEF) .....	16
Year 7 School Contributions .....	16
Payment Methods .....	17
Financial Support .....	17
Student Insurance .....	17
Stationery List .....	18
Bring Your Own Device (BYOD) .....	19
Disability Inclusion .....	20
Big Life Footpath .....	21
General Medical Form .....	23
Camps, Sports & Excursions Fund (CSEF) Application Form .....	25
School Saving Bonus .....	27
State Schools' Relief Order Form .....	29
Staff Contacts .....	23



# WELCOME

Dear Families,

Thank you for your attendance at our information forum and for allowing us to begin this next step of your family's educational journey. We hope that your child will find their place at Warrnambool College and certainly be the best version of themselves. We advocate that every Warrnambool student can and should thrive; ultimately, we want your child to experience success.

This booklet serves as a reminder of key information and dates that will arise at the College in the period between now and your child commencing with us. We are mindful to balance the amount of information required to ensure a smooth transition for your child, though also conscious not to overload families with too much at once.

If you find after tonight that you have any queries at all, please contact our administration staff or Principal team who are happy to assist. The College contact number is 5564 4444.

If you missed the Information Evening, all presentation slides from this session can be found on our website: [www.wbllcoll.vic.edu.au](http://www.wbllcoll.vic.edu.au)





# KEY DATES

## 2024 - TERM 4

- **Wednesday 16th Oct. 2024**  
Year 7 Information Evening 6pm  
*College Auditorium*
- **Monday 9th Dec. 2024**  
Small Schools' Orientation Day
- **Tuesday 10th Dec. 2024**  
State-wide Orientation Day

## 2025 - TERM 1

- **from Thursday 23rd Jan. 2025**  
Administration staff will be available for payments and general enquiries in the Administration Office.
- **Wednesday 29th Jan. 2025**  
Warrnambool College Day  
All families are invited to attend during the day (*more information to be confirmed via email & socials*).
- **Thursday 30th Jan. 2025**  
Classes begin at 9:00am

# TO DO LIST

PLEASE READ THE INFORMATION BELOW AND COMPLETE AND RETURN ANY FORMS AND DETAILS WHERE APPLICABLE.

- Review and update the personal information** for your child, family and medical information on the supplied printout. Please write changes on the form, and return to the College.
- Set up your Compass log-in.**  
Use the emailed information; if not received please contact the College. This enables you to stay connected and involved in your child's learning and for College communication.
- Read and review the **Year 7 camp information** enclosed.
- Read all relevant **school policies** including but not limited to: ICT Acceptable Use Agreement, Mobile Phone Policy, Digital Learning Policy (available on our College website).
- Complete the **Student House Choice Form by Friday Nov. 8th** – access via QR Code.  
**NB:** *We will do our best to accommodate all House requests, however we cannot guarantee preferences.*
- CSEF/SSR Uniform Package Form** (for families who received CSEF in 2024).
- CSEF Application Form** (for families with health care/pension cards or foster families).



## Administration Office - January 2025

The College will be open for families from Thursday 23rd January 2025 from 9:00am to 4:30pm. Families may make payments and have any questions or queries answered. Warrnambool College Day on the 29th January 2025, is extremely busy, it is far better to come in early and finalise any queries prior.

## Commencement dates for students 2025

Students and parents/guardians will be required to attend school for Warrnambool College Day on **Wednesday 29th of January, 2025.**

**The first official date for classes for all students will be Thursday 30th of January 2025.**

## Sick Bay

Sick bay is available for minor injuries and illnesses. When a student attends sick bay a post will be made on Compass visible to parents. If deemed to be more serious, parents will be contacted directly and an ambulance may be called. If you need to contact our sick bay or wellbeing centre directly, please call 5564 4412.

## Communication

**Compass** - Our main form of communication is via Compass. Please ensure you have logged in your details and are familiar with the platform.

**Facebook & Instagram** - Our Facebook and Instagram pages communicate and celebrate student achievements and events at the College, please follow us at: [fb.me/wbool.college](https://fb.me/wbool.college)  
[www.instagram.com/wbool.college/](https://www.instagram.com/wbool.college/)

**Newsletter** - We issue a newsletter twice a term. Reminders via Compass and email will be sent when the newsletter is available. All editions of the newsletter are also available on our website.

**Website** - Our website provides access to detailed information in regards to your child's education including policies, forms, curriculum, subject information, and assorted resources.  
[www.wbllcoll.vic.edu.au](http://www.wbllcoll.vic.edu.au)

## Contacting your child

Every effort should be made to ensure your child knows of the day's arrangements before they come to school. **In the event of an emergency**, if you need to get a message to them we will do our utmost to deliver the message, though at times this is not possible. If you need to collect your child in an emergency please contact the College before you arrive to ensure we have your child available for you when you do arrive.

## Student Attendance

Your child's attendance at school is very important to their educational outcomes and Warrnambool College has in place procedures to monitor attendance and follow up on unapproved absences.

Parents will be sent an SMS on the day that an unauthorised absence is recorded for their child. This helps parents and the College keep accurate records of absences, and also allows College staff to know when students are ill, need work at home, or similar help. The SMS is sent if a student is absent in Home group and/or period 1 and a further email at 2:00pm if any other absences have not been updated on Compass for the day.

**Lateness and Early Departure:** A student who arrives late to school should attend the front office to sign in. A student who is departing school early should be collected from the front office and be signed out on Compass.

## Notifying College of your child's absence:

Log onto Compass (use the emailed information; if not received please contact the College.) and approve the absence.

Please note that verbal approval for absences is not acceptable, this information is required on Compass. If you require help in how to enter the information on Compass, please contact your House Office on 5564 4444.

# SMALL SCHOOLS' ORIENTATION DAY

**MONDAY 9th December 2024**

**THIS DAY IS FOR STUDENTS WHERE LESS THAN 10 STUDENTS ARE ATTENDING FROM THAT SCHOOL, BOTH GOVERNMENT AND NON-GOVERNMENT SCHOOLS.**

- Students are able to travel to the College by bus. Parents may drop their children outside the College Auditorium if they wish.
- There will be a general welcome for all students in the College Auditorium at 9:00am.
- Students should bring their morning tea and lunch. The College canteen will be available for students to purchase items if required.
- We would ask all students to bring a pencil case and paper to write on.
- Students should attend "out of uniform", however we ask parents to ensure clothing is appropriate; particularly with regard to lettering or signage on T-shirts. Students must wear closed toed shoes (eg. runners). Students may be doing PE, Art, Woodwork or Drama so clothing needs to be comfortable and appropriate for these activities.

## 2025 SPP STUDENTS

**Students in the Sporting Pathway Program are invited to a half day session on Monday 9th December, 9am-12pm in the College Hall.**

- Students will complete their musculoskeletal screening, some base line fitness testing and get to know you activities, prior to the Statewide Orientation Day.
- Students will have the chance to meet the SPP team, ask questions they may have regarding the program and make friends who share similar passions.

## INDIGENOUS ENGAGEMENT PROGRAM

**We will be running an Indigenous Engagement Program on Monday 9th December, 12:30pm - 3:25pm. Please meet at the front office.**

- The induction will be run by our Stars and Clontarf Academies. Our goal is to make students feel culturally safe in the school environment, welcome them to the Academies and provide an opportunity to meet staff.
- Students and families may ask questions, and staff will address any concerns students may have ahead of the Orientation Day and starting secondary school in 2025.

*Further information will be communicated with families who have indicated AITSI status.*



# STATEWIDE ORIENTATION DAY

## TUESDAY 10th December 2024

### THIS DAY IS FOR ALL WARRNAMBOOL COLLEGE'S 2025 YEAR 7 STUDENTS.

- There will be a general welcome for all students in the College Auditorium at 9:00am.
- Students are able to travel to the College by bus. Parents may drop their children outside the College Auditorium if they wish.
- Students should bring their morning tea and lunch. The College canteen will be available for students to purchase items if required.
- We would ask all students to bring a pencil case and paper to write on.
- Students should attend "out of uniform" however we ask parents to ensure clothing is appropriate; particularly with regard to lettering or signage on T-shirts. Students must wear closed toed shoes (eg. runners). Students may be doing PE, Art, Woodwork or Drama so clothing needs to be appropriate and comfortable for these activities.

Our transition coordinator, **Jackson Greene**, will be visiting primary schools in Term 4 to answer any questions and assist in the transition process.

As always, if you have any queries relating to Orientation Day please do not hesitate to contact the Front Office on 5564 4444.



# UNIFORM POLICY

**STUDENTS OF WARRNAMBOOL COLLEGE ARE REQUIRED TO ABIDE BY THE UNIFORM DRESS CODE. A SCHOOL UNIFORM ENABLES STUDENTS TO DEVELOP A SENSE OF PRIDE AND IDENTIFICATION WITH OUR SCHOOL COMMUNITY. IT PROMOTES EQUALITY AMONGST STUDENTS AND ENSURES HEALTH AND SAFETY WITHIN THE SCHOOL ENVIRONMENT.**

Students are expected to wear the Warrnambool College uniform with pride. Uniforms should always be neat and clean in appearance. Students wearing the uniform at any time are representing the College; they are required to wear the uniform correctly and abide by the College Code of Conduct until they have arrived home and changed.

In accordance with OHS guidelines and risk minimisation strategies, decorative jewellery is not permitted to be worn to school. Ear piercings and one nose ring is permitted provided these are sleepers or studs.

Please note, students are strongly encouraged to wear a SunSmart hat when outside during terms 1 and 4. A College beanie is also available to purchase and can be worn in terms 2 and 3 when outside. Hats and beanies are available for purchase from Lowes at Gateway Plaza.

- The sports uniform must be worn to school for timetabled PE classes and inter-school competitions. It can also be worn on regular school days. Students in the Sporting Pathway Program (SPP) are permitted to wear their SPP uniform on any school day.
- Students in school academies are permitted to wear approved academy polo shirts on any school day.
- If students are not in full school uniform on the day of a school excursion, they may not be permitted to attend.

**At Warrnambool College our flexible uniform policy allows students to choose uniform options from the list on the next page that they are most comfortable in.**

**Sports uniform and SPP uniform should be worn on days when students have practical classes.**

## UNIFORM SUPPLIERS

**Lowes** are our College uniform suppliers. Lowes are located at Gateway Plaza in Warrnambool and are open 7 days per week for your convenience. You can shop online using the following link: [www.wblcoll.vic.edu.au/enrolment/uniform](http://www.wblcoll.vic.edu.au/enrolment/uniform)





# WARRNAMBOOL COLLEGE UNIFORM

## SHIRTS & POLOS

- White polo shirt w/ College logo  
- long or short sleeve
- Navy-blue polo shirt w/ College logo
- Navy-blue & green Sports polo w/ College logo

*Students may wear a plain white or navy-blue long sleeve top under their polo/jumper.*

## PANTS/SHORTS

- Plain navy-blue track pants (no large logos)
- Navy-blue track pants w/ College logo
- Navy-blue & green Sports shorts w/ College logo
- Plain navy-blue shorts (no large logos)
- Dark grey melange trousers
- Dark grey melange shorts

*No skins/leggings or grey/black tracksuits or yoga pants are permitted.*

## SKIRT/DRESS

- Green, blue & white checked pleated skirt
- Navy-blue & white check fabric dress

## SKORTS

- Plain navy-blue skorts (no large logos)

## OUTERWEAR

- Striped rugby jumper w/ College logo
- Navy-blue soft-shell jacket w/ College logo (optional)
- Navy-blue puffer jacket w/ College logo (optional)

*Black or non-school jackets/hooded jumpers are not permitted.*

## SHOES

- Traditional black leather polishable shoes
- Appropriate runners may also be worn

## HATS

- Warrnambool College bucket hat
- Warrnambool College beanie

*Peaked caps are not permitted.*

## SCARF

- Navy blue, white or green scarf

## SPP UNIFORM

We strongly encourage you to purchase a minimum of the following items:

### SHIRTS/POLOS

- 1 x SPP Dress polo (to be worn to school and to formal events)
- 2 x SPP Training tops

*Students may wear a plain white or navy-blue long sleeve top under their polo/jumper.*

### PANTS/SHORTS

- Plain navy-blue track pants (no large logos)
- Navy-blue track pants w/ College logo
- Navy-blue & green Sports shorts w/ inner compression & College logo

*No skins/leggings or grey/black tracksuits or yoga pants are permitted.*

### OUTERWEAR

- As per Warrnambool College uniform outlined above.

*Black or non-school jackets/hooded jumpers are not permitted.*



## ALL YOUR UNIFORM QUESTIONS ANSWERED

### Where can I purchase uniform?

- LOWES is our school supplier of uniform, you can purchase instore or online via their website.
- Uniform can also be purchased second hand via your own networks in the community.

### What uniform do I need to wear?

- All students are required to wear school uniform everyday. You can choose from the range of uniform items that we offer to ensure you are comfortable and warm.
- SPP students are required to purchase the SPP shirts and be dressed in sport uniform for SPP classes.
- All students undertaking PE classes are required to wear sports uniform on these days.

### Can I wear layers under my uniform?

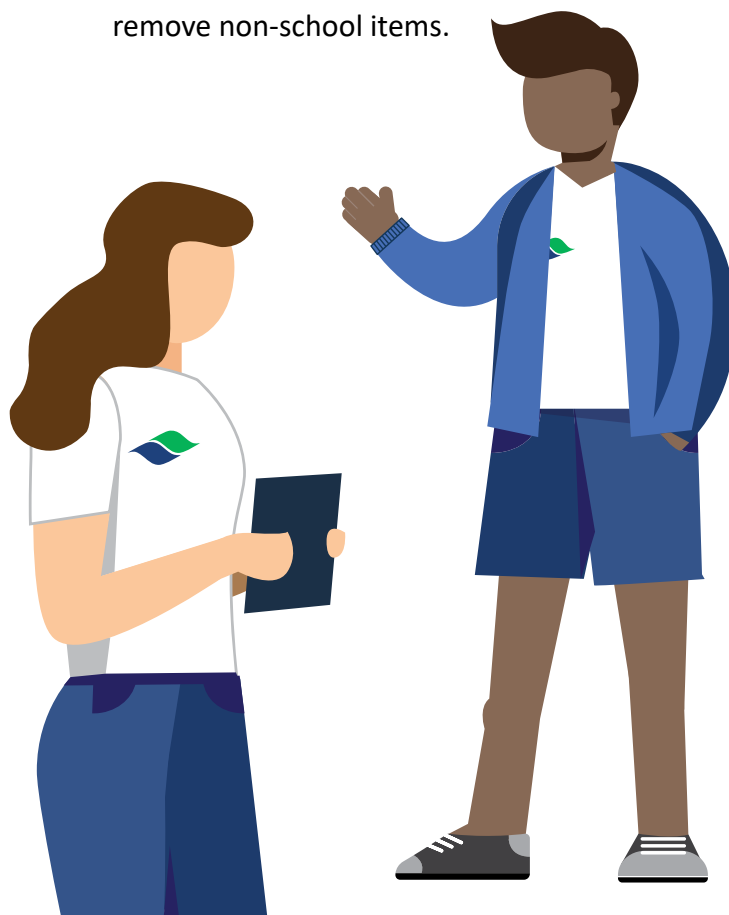
- We encourage students to layer their uniform. Every room in our school has split system heating and cooling to ensure that we provide comfortable learning environments.
- Students have many options to layer their uniform to keep warm. Including school polo shirts, rugby jumpers, soft shell and puffer jackets.
- Hooded jumpers are not permitted as part of our uniform at any time.
- Students can wear plain long sleeve tops including non-hooded jumpers that are navy or white under their polo shirts, for extra warmth.
- Non-school jackets are not a part of our uniform. They are not permitted to be worn.

### What pants can I wear to school?

- There are a range of school uniform pants, shorts, skirts and dresses that students can wear.
- Black and grey track pants and black shorts are not part of our uniform.
- Leggings of any sort are not part of our uniform and cannot be worn as part of the sports uniform, or daily to school.
- While we have provided navy blue track pants at LOWES, we also support families to source their own plain navy-blue track pants and shorts from other stores.

### Can I wear a beanie, hat or scarf?

- We have a school bucket hat that students can purchase and wear.
- We have a school beanie that students can purchase and wear.
- Students can wear plain blue, green or white scarves.
- Students will be asked to remove non-school items.



### What if I can't wear my uniform?

- If you are unable to wear a part of your uniform for 1-2 days due to unforeseen circumstances. A student requires a uniform pass.
- A note written and dated by parents/carers needs to be presented to the Admin staff in their house office before school, who will complete the pass on compass.
- If a uniform pass is required for more than 1-2 days, then families will need to speak with their House Leader.
- For example, if your shorts are dirty, you can wear a different pair of shorts for one day.
- Hooded jumpers and leggings are not acceptable replacement items.

### What if my child has a medical condition that impacts them wearing part of the school uniform?

- If your child is unable to wear elements of school uniform due to medical reasons, then a letter from a Medical Practitioner is required.
- This letter should outline the items your child is unable to wear, the suggested alternative, and the duration of the exemption.
- This will then require Principal approval. In some cases, the Principal may need to contact the Medical Practitioner directly to discuss other options that your child might wear that align with our uniform policy.

### What if my child comes to school out of uniform without a note?

- Students who are not in correct uniform, where possible, will be asked to remove the item that is incorrect.
- A compass post will be made and this generates a text message to Parent A on compass.
- When a student has 4 posts, House will contact the family to notify that a student will be required to attend a House Detention after school.
- If the student continues to not wear uniform, they will be required to attend a Principal's afterschool detention and the Principal will discuss with parents/carers.

### Can I donate second hand uniform?

- Yes, we are always happy to accept second hand uniform donations.
- Items should be in a good condition with no tears or stains.
- Clean items can be brought to the front office at any time.
- We cannot accept Academy tops with student names printed on them.



**If you require assistance with uniform, support is available through our Wellbeing Team and State Schools Relief. Please contact your child's House for further information.**



# THE BIG 3

HOW TO SUPPORT YOUR STUDENT TO BE SUCCESSFUL AT SCHOOL...

## 1 ATTENDANCE

- Arrive at school prior to 8:55am each day.
- Attend all school days (there are 3 student free days per year).
- Sign in at the front office or on Compass when arriving late.
- Sign out at the front office or on Compass when leaving early.
- Approve absences on Compass when you know your student will be absent.
- Make contact with the school regarding extended absences/illness.

## 2 READY TO LEARN

- Discuss with your student what they have on each day and what they might need help with.
- Ensure your student has all the books and stationery they require throughout the year.
- Ensure your student is wearing the correct uniform at all times.
- Ensure your student has a school approved device that can be connected to the school network and support the apps required.
- Ensure your student has a padlock for their locker so they can safely lock their bag and mobile phone in their locker each day.
- Support your student to maintain appropriate behaviour for a safe and productive learning environment.

## 3 COMMUNICATION

- Read all communication from the school so you are aware of events and important information.
- Make contact with your student's Mentor, House team or Classroom Teacher if you have any questions or concerns about their academic progress or wellbeing
- Log onto Compass regularly to access reports, CAT/SAC results, review the newsfeed, approve events and excursions, book parent/teacher conferences, approve and track absences and to monitor Compass posts relating to your student's progress.
- Share relevant information with the school regarding your student, so we can best support them. For example, Wellbeing information, additional learning needs or social/emotional needs.
- Check your contact details are current on Compass so you receive all relevant information and so we can contact you when required.

# ATTENDANCE

ALL YOUR QUESTIONS ANSWERED



## WHAT TIME DO I NEED TO BE AT SCHOOL?

Students are expected to arrive by 8:55am when the music starts indicating that it's time to make your way to Homeroom. We suggest students arrive before this time, to ensure they have placed their bags and mobile phone in their lockers and organised their books for the first two lessons. Remember to observe the behaviour expectations of the areas of the school.



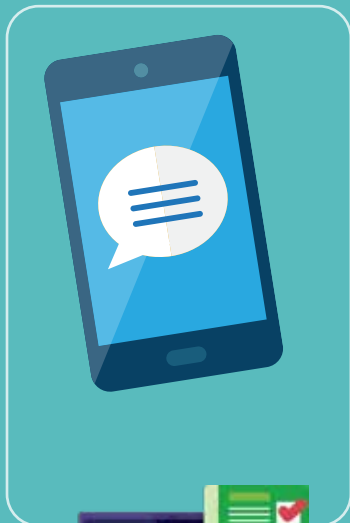
## WHAT IF I'M LATE?

Students who arrive after 9am will need to go to the front office to sign in. Alternatively Parents/Carers can approve lateness on Compass prior to arrival. Please avoid being late as you will miss the important messages delivered during Homeroom.



## WHAT IF I NEED TO LEAVE EARLY?

Bring a note signed by your Parent/Carer to the office at the time you need to leave to be signed out. Alternatively Parents/Carers can approve departure/absences on Compass or present in person to sign out a student. Students who leave without consent will be deemed absent without approval and potential consequences will be put in place.



## WHAT IF I AM ABSENT FROM SCHOOL?

Parents/Carers are legally required to explain why a student is absent. This should be completed on Compass prior to the start of the school day. Text messages will be sent to Parents/Carers when a student is absent from Homegroup and/or Period 1. Absences can also be approved by calling the front office and choosing your House Office from the main menu.

If a student is going to be absent for an extended period of time due to medical reasons or a family holiday, Parents/Carers should contact their House Office to inform of the dates and students can speak with their teachers to collect work.



## DO YOU NEED HELP ACCESSING COMPASS?

Contact our General office or your House office on 5564 4444, to seek assistance.

**ATTENDANCE MATTERS: SCHOOL SUCCESS STARTS WITH ATTENDANCE**

# READY TO LEARN

14

at Warrnambool College

When I am  
ready to learn  
this is what it  
looks like...



I have  
put MY  
**MOBILE  
PHONE**  
in MY LOCKER



I am  
wearing  
MY FULL

**SCHOOL  
UNIFORM**



I have  
left MY  
**BAG**  
in MY LOCKER



I have MY  
**BOOKS,  
DEVICE,  
& PENS**

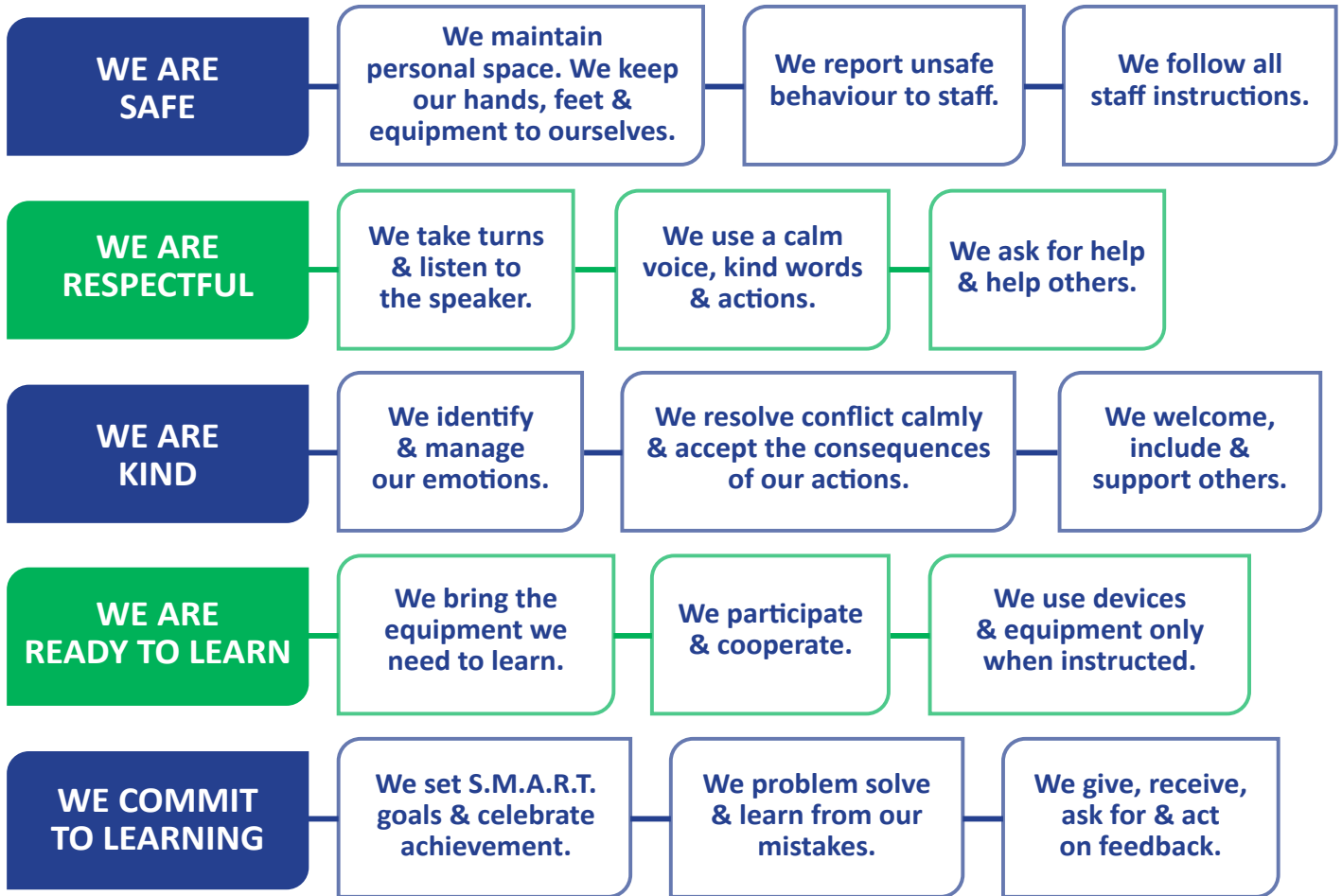


I AM on  
**TIME**  
for CLASS



Warrnambool  
COLLEGE

# BEHAVIOUR & ACADEMIC EXPECTATIONS



# NON-CLASSROOM BEHAVIOUR EXPECTATIONS



WE FOLLOW THE BEHAVIOUR EXPECTATIONS IN ALL WARRNAMBOOL COLLEGE SPACES.

We are ready to **READ & EXPLORE** in the **LIBRARY & INDOOR SPACES**

We are ready to **PURCHASE** in the **CANTEEN**

We are ready to **BE ACTIVE & SAFE** in the **GYM**

# STATE SCHOOL RELIEF/CSEF

# YR 7 SCHOOL CONTRIBUTIONS

Families who received Camps, Sports, Excursion Funding (CSEF) in 2024 will be eligible for the State Schools' Relief Uniform Package.

The SSR form is included in this information pack and details what items are available for each student. Please return this form to the main office by 8th November 2024 to allow sufficient processing time for SSR to lodge and return vouchers to parents. **A paper copy of the SSR vouchers must be presented to Lowes when purchasing uniforms through SSR.**

The amount offered through SSR does not always cover the full cost of the items listed on the SSR form. If there is a shortfall, this will need to be paid for by parents/ guardians.

Shoes requested through SSR will be available for collection from House offices on Orientation Days on the 9th and 10th of December 2024. If shoes are not received at the school by these dates parents will be notified via SMS as soon as they are available.

**FAMILIES WHO RECEIVED CSEF IN 2024 WILL NEED TO REAPPLY FOR 2025 DUE TO THEIR CHANGE IN SCHOOL. THE FORM IS INCLUDED IN THIS PACK. PLEASE RETURN THIS COMPLETED FORM TO THE MAIN OFFICE. APPLICATIONS CLOSE ON 4th JUNE 2025.**

**PLEASE REFER TO THE COLLEGE WEBSITE: [www.wblcoll.vic.edu.au](http://www.wblcoll.vic.edu.au) FOR DETAILED INFORMATION REGARDING OUR SCHOOL CONTRIBUTIONS FOR 2025.**

Our website provides details regarding financial support for families, payment methods and the full breakdown of what our school fees cover.

In an endeavour to reduce costs to our families and simplify processes, we are pleased to advise that students in years 7 and 8 are only required to purchase an English textbook. Other textbooks or software programs will be purchased by the College. The cost of these items are covered by payment of your school contributions.

Therefore, instead of paying for a booklist pack, these costs are provided at a reduced price. We do have a basic list of stationery your child **may** require included further in this booklet.

Families can choose to make one payment of school contributions at the start of each year to the College, we do also provide you with the flexibility to make monthly payments to alleviate the financial impact at the start of the year. This payment option is very simple and available through Compass.

Families experiencing financial hardship are invited to contact our Business Manager to discuss an extension to these payment plans.

Payment of your contributions provides your child/ren with the breadth of programs and learning opportunities we have available.





## ARRANGEMENTS FOR PAYING YOUR 2025 SCHOOL CHARGES ARE AS FOLLOWS:

Curriculum contributions will be accessible for payment through **Compass**. These will be visible on your home page by the end of 2024 with a breakdown of each category. This is a very simple, user friendly process for families, providing the flexibility to organise your payments any time online.

**Compass** is the package we use to communicate with families and provide a convenient, pay anytime option for families. This eliminates the need for cash and also for families to come into the College.

Families are able to make one payment for all students by making the payment through the shopping cart, or arrange your payment plan. If payment plan does not work for you, please contact administration to amend payments to suit your circumstances.

Compass records all payments received through Compass Pay, it does not have a record of your credits or payments received via any other method, eg: Bpay, cash, eftpos.

**Compass Parent Handbook**  
[www.wblcoll.vic.edu.au/about/compass-guide](http://www.wblcoll.vic.edu.au/about/compass-guide)

Warrnambool College understands that some families may experience financial difficulty. We offer a range of support options, including:

- **Camps, Sports and Excursions Fund**  
The government provides the Camps, Sports & Excursions Funding of \$250 per child for any eligible families. Please ensure you apply for this funding through the school via this link for the form and details. Applications close at the end of term 2.  
[www.education.vic.gov.au/about/programs/Pages/csef.aspx](http://www.education.vic.gov.au/about/programs/Pages/csef.aspx)
- **NILS – The No Interest Loan**  
For more information call 13 64 57 or go to the following link: [nils.com.au/](http://nils.com.au/)

## STUDENT INSURANCE

### STUDENT ACCIDENT INSURANCE, AMBULANCE COVER ARRANGEMENTS AND PRIVATE PROPERTY BROUGHT TO SCHOOL.

The Department does not provide personal accident insurance or ambulance cover for students. Parents/carers of students, who do not have student accident insurance/ ambulance cover, are responsible for paying the cost of medical treatment for injured students, including the cost of ambulance attendance or transport as well as any other transport costs. Parents/carers can purchase insurance policies from commercial insurers.

# STATIONERY LIST

## GENERAL STATIONERY

- iPad or Macbook – compulsory item
- iPad keyboard – compulsory item
- Headphones/earphones that connect to iPad - compulsory
- Padlock – combination lock for school locker - compulsory

**The following items are required for all subjects at all year levels and can be retained from previous years and replaced where necessary.**

- Binder books – A4 96 page at least 1 per subject
- Display folders x 2
- Pens – blue, black, red
- Highlighter set of 6 colours
- Scissors
- Protractor
- Eraser
- Sharpener
- Pencil case
- Ruler – 30 cm
- Glue sticks
- Pencils – 2H, 2B, HB
- Binder book – A4 96 page 10mm grid x 2 Maths specific
- Calculator scientific T130XB Multiview (year 7 or retain from previous years)
- Binder Wallet x 2

## YEAR 7 ENGLISH TEXT

**Students are required to purchase one novel for English classes as per below:**

### CORE & SPP

- Percy Jackson and the Lightning Thief*  
Author: Rick Riordan

### SEAL

- Lenny's Book of Everything*  
Author: Karen Foxlee

## ART MATERIALS

- 1 x Brush Roymac Achiever White Taklon Round - 02
- 1 x Brush Roymac Achiever White Taklon Round - 06
- 1 x Eraser Staedtler Rasoplast 526 B20
- 1 x Marker Artline #200 Black 0.4mm
- 1 x Marker Artline #210 Black 0.6mm
- 1 x Pencils-Coloured Aquarell Pkt 24's
- 1 x Visual Art Diary A3 110gsm 60 Sheet/120 Page
- 1 x Glue Stick Bostik 35gm
- 2 x Pencil (HB) Goldfaber
- 1 x Paint Watercolour Micador Stylist Palette 36 Disc



# BRING YOUR OWN DEVICE (BYOD)

The Warrnambool College ‘Bring Your Own Device (BYOD)’ is designed to enable all students to have access to appropriate technological resources in all their classes.

Warrnambool College takes the role of computers in the classroom seriously to ensure all students have access to the same learning outcomes. The purpose of BYOD is to establish a framework that facilitates the use of computers for the purposes of teaching and learning in the classroom.

Students are entitled to connect one computer only to the College computer network. Before purchasing a computer, we recommend you read the Digital Learning Policy as it relates to Year 7 to 9 students.

**The BYOD requires Year 7 to 9 students to have an iPad with a physical keyboard OR an Apple Macbook.**

\*The complete Digital Learning Policy and ICT Acceptable use Agreement can be found on the College website: [www.wbllcoll.vic.edu.au](http://www.wbllcoll.vic.edu.au)

Year 7	Year 8	Year 9	Year 10	Year 11	Year 12
<b>Option 1:</b> iPad with a physical keyboard <b>Option 2:</b> Apple Macbook (Air or Pro) M1/M2/M3 <i>Note: Must not have sim card/cellular access at school.</i>			Transition to Apple Macbook / Windows Laptop *	Apple Macbook/ Windows Laptop / iPad*	Apple Macbook/ Windows Laptop / iPad*

## Apple Classroom

Warrnambool College utilises ‘**Apple Classroom**’ technology – which empowers teachers to keep students focused, on task and supports students to access online learning materials. **Classroom** gives ‘eyes’ to the teacher allowing them to see what each student is doing on their device.

It also allows teachers to guide students to the correct apps, worksheets, resources, and websites and lock students into an app or website to ensure students can use their class time to work towards their personal best.

**Apple Classroom uses bluetooth technology, so it only activates in the vicinity of the teachers device AND on the same wireless network.**

## Purchasing for BYOD

Warrnambool College supports the local community and as such encourages parents to purchase a device that meets the BYOD requirements from a local supplier. However, the College does not provide recommendations with respect to specific local suppliers.

*Students who refuse to enable this, will be treated in line with the refusal to follow instruction procedures.*



## Changes to Disability Inclusion Support

**From Wednesday 29<sup>th</sup> January 2025, Warrnambool College will begin introducing some changes to help us strengthen support for students with disability.**

Disability Inclusion will help our school better understand what our students need to help them learn and participate at school. It involves:

- a new Disability Inclusion Profile and school funding model to strengthen support for students with disability
- more resources, training and coaching for our teachers and school staff about the best ways to support students with disability.

From Wednesday 29<sup>th</sup> January 2025, the **Disability Inclusion Profile** will be available to help us identify the strengths, needs, and adjustments we can make to assist students' learning, participation and engagement at school.

The Disability Inclusion Profile replaces the Program for Students with Disabilities (PSD) application process.

Over the coming years, we will invite families of students who are currently part of the PSD, and other students with disability and additional learning needs, to participate in a meeting to complete a Disability Inclusion Profile.

We will use **new school funding and supports** for more training and professional development for teachers and school staff, expert advice about disability, employing new teachers and other staff to help plan and deliver adjustments for students, and resources to support learning.

The new Disability Inclusion approach ensures our school is better able to support students with disability and additional learning needs.

Warrnambool College is excited to be part of Disability Inclusion and we look forward to continuing to support our students to learn and thrive.

If you have any questions about your child's learning or Disability Inclusion, or need translation or interpreting assistance, please contact **Anita Bounds** via phone **5564 4444** or email [Anita.Bounds@education.vic.gov.au](mailto:Anita.Bounds@education.vic.gov.au)







# General Medical Advice Form

for a student with a health condition

This form is to be completed by the student's medical/health practitioner providing a description of the health condition and first aid requirements for a student with a health condition. This form will assist the school in developing a Student Health Support Plan which outlines how the school will support the student's health care needs. **Please only complete those sections in this form which are relevant to the student's health support needs.**

Name of School: \_\_\_\_\_

Student's Name: \_\_\_\_\_ Date of Birth: \_\_\_\_\_

MedicAlert Number (if relevant): \_\_\_\_\_ Review date for this form: \_\_\_\_\_

## Description of the Condition

### Observable signs and symptoms:

---

---

---

### Frequency and severity:

---

---

---

### Triggers (if applicable):

---

---

---

### Possible impact on school-based activities (student's learning, physical activities):

---

---

---

## First Aid

If the student becomes ill or injured at school, the school will administer first aid and call an ambulance if necessary. If you anticipate the student will require anything other than a standard first aid response, please provide details on the next page, so special arrangement can be negotiated.



**Observable sign/reaction**



**First aid response**

▽

▽

▽

**Privacy Statement**

The school collects personal information so as the school can plan and support the health care needs of the student. Without the provision of this information the quality of the health support provided may be affected. The information may be disclosed to relevant school staff and appropriate medical personnel, including those engaged in providing health support as well as emergency personnel, where appropriate, or where authorised or required by another law. You are able to request access to the personal information that we hold about you/your child and to request that it be corrected. Please contact the school directly or FOI Unit on 96372670.

<b>Authorisation</b>
<b>Name of Medical/Health practitioner:</b>
Professional Role:
Signature:
Date:
Contact details:
<b>Name of Parent/Carer or adult/independent student **:</b>
Signature:
Date:

If additional advice is required, please attach it to this form

\*\*Please note: Adult student is a student who is eighteen years of age and older. Independent student is a student under the age of eighteen years and living separately and independently from parents/guardians (See: [Decision Making Responsibility for Students - School Policy and Advisory Guide](#)).



# Camps, Sports and Excursions Fund APPLICATION Form

School Name

School REF ID

## Parent/legal guardian details

Surname \_\_\_\_\_

First name \_\_\_\_\_

Address \_\_\_\_\_

Town/suburb \_\_\_\_\_ State \_\_\_\_\_ Postcode \_\_\_\_\_

Contact number \_\_\_\_\_

Centrelink pensioner concession **OR** Health care card number (CRN)

-  -  -  **OR**

Foster parent\* **OR**  Veterans affairs pensioner (Gold Card)\*\*

\*Foster Parents must provide a copy of the temporary care order letter from the Victorian Department of Families, Fairness and Housing (DFFH).

\*\*Applicants must provide a copy of the Veteran Affairs Gold card.

## Student details

Child's surname	Child's first name	Student ID	Date of birth (dd/mm/yyyy)	Year level

I authorise the Victorian Department of Education (DE) to use Centrelink Confirmation eServices to perform an enquiry about my Centrelink customer details and concession card status to enable the business to determine if I qualify for a concession, rebate or service. I also authorise the Victorian Department of Families, Fairness and Housing (DFFH) to provide the results of any enquiry to DE regarding temporary care orders.

I understand that:

- DFFH or Centrelink will use information I have provided to DE to confirm my eligibility for the Camps, Sports and Excursions Fund and will disclose to DE personal information including my name, address, payment and concession card type and status.
- This consent, once signed, remains valid while my child is enrolled at a registered Victorian school unless I withdraw it by contacting the school.
- I can obtain proof of my circumstances/details from DFFH and provide it to my child's school so that my eligibility for the Camps, Sports and Excursions Fund can be determined.
- If I withdraw my consent or do not alternatively provide proof of my circumstances/details, I may not be eligible for the Camps, Sports and Excursions Fund provided by DE.
- Information regarding my eligibility for the Camps, Sports and Excursions Fund may be disclosed to DFFH and/or State Schools Relief for the purpose of evaluating concession card services or confirming eligibility for assistance.

You can request access to the personal information that we hold about you, and to request that any errors be corrected, by contacting your child's school.

Signature of applicant \_\_\_\_\_

Date \_\_\_\_ / \_\_\_\_ / \_\_\_\_



## Camps, Sports and Excursions fund eligibility

Below are the criteria used to determine a student's eligibility for the Camps, Sports and Excursions Fund (CSEF).

### Criteria 1 – Eligibility

To be eligible\* for the fund, a mature minor of sixteen years of age or over, a parent or legal guardian of a student attending a registered Government or non-government Victorian primary or secondary school must:

- on the first day of Term one, or;
  - on the first day of Term two.
- a) Be an eligible beneficiary within the meaning of the State Concessions Act 2004, that is, be a holder of Veterans Affairs Gold Card or be an eligible Centrelink Health Care Card (HCC) or Pensioner Concession Card (PCC) holder, OR
  - b) Be a temporary foster parent, and;
  - c) Submit an application to the school by the due date.

\* A special consideration eligibility category also exists. For more information, see: [Camps, Sports and Excursions Fund \(CSEF\): Eligibility | education.vic.gov.au](https://www.education.vic.gov.au/csef/eligibility)

Mature minors or parents who receive a Carer Allowance on behalf of a child, or any other benefit or allowance not income tested by Centrelink, are not eligible for the CSEF unless they also comply with one of (a) or (b) above.

### Criteria 2 - Be of school age and attend school in Victoria

School is compulsory for all Victorian children aged between six and seventeen years of age inclusive.

For the purposes of CSEF, students may be eligible for assistance if they attend a Victorian registered primary or secondary school. Typically, these students are aged between five and eighteen years inclusive.

CSEF is not payable to students attending pre-school, kindergarten, home schooling, or TAFE.

#### Eligibility Date

For concession card holders, CSEF eligibility will be subject to the parent/legal guardian's concession card being successfully validated with Centrelink on **28 January 2025 and/or 22 April 2025**.

## Payment amounts

### CSEF payment amount

The CSEF is an annual payment to the school to be used towards camps, sports and/or excursion expenses for the benefit of the eligible student.

- Primary school student rate: \$150.00 per year.
- Secondary school student rate: \$250.00 per year.

The CSEF is paid directly the school and will be allocated by the school towards camps, sports and/or excursion costs for your child.

**For ungraded students**, the rate payable is determined by the student's date of birth. For more information, see: [Camps, Sports and Excursions Fund \(CSEF\): Payment amounts | education.vic.gov.au](https://www.education.vic.gov.au/csef/payment-amounts)

**Foundation and Year 7 government school students** who are CSEF recipients are also eligible for a uniform voucher. Schools are required to make applications on behalf of parents, so please register your interest at the school.

## How to complete the application form

**NOTE: ALL SECTIONS MUST BE COMPLETED BY PARENT/LEGAL GUARDIAN**

1. Complete the PARENT/LEGAL GUARDIAN DETAILS section.  
Make sure that the Surname, First Name, and Customer Reference Number (CRN) details match those on your concession card. You will also need to provide your concession card to the school.  
If you are claiming as a Foster Parent or a Veteran Affairs Pensioner, you will need to provide a copy of documentation confirming your status as a temporary Foster Parent or provide your Veterans Affairs Pensioner Gold card to the school.
2. Complete the STUDENT/S DETAILS section for students at this school.
3. Sign and date the form and return it to the school office as soon as possible. The CSEF program for 2025 closes at the end of term two 2025.

CSEF payments cannot be claimed retrospectively for prior years.

**Queries relating to CSEF eligibility and payments should be directed to the school.**



# School Saving Bonus

## Information for government school parents and carers

### About the School Saving Bonus

The Victorian Government is making life that little bit easier for families by providing a one-off \$400 School Saving Bonus.

This support will help cover the cost of school uniforms, textbooks, and school activities like camps, excursions and sports.

The School Saving Bonus is in addition to existing and continuing means-tested supports for Camps, Sports and Excursions Fund (CSEF) and the Affordable School Uniforms Program.

The School Saving Bonus will be provided to schools and families in Term 4, 2024.

### Who receives the School Saving Bonus

The School Saving Bonus is available for parents and carers of all Victorian government school students from Prep to Year 12 in 2025, except for full-fee international students, home schooled students, TAFE students and students attending kindergarten in 2025.

### Actions for parents and carers

Parents and carers of children who meet the School Saving Bonus eligibility above are required to do the following by **Friday 18 October 2024**:

- **Complete enrolment**

If your child, or children are changing government school for Term 1 2025, or starting Prep or Year 7 in 2025, please complete enrolment. For more information, read about [Enrolling in School](#).

- **Check your contact information**

Ensure your contact information is up to date with your school. You can check this information by contacting your school directly.

### Accessing the \$400 School Saving Bonus

You do not need to apply for the School Saving Bonus.

The Department of Education will email you in November 2024 with your \$400 School Saving Bonus. You will be able to access it via an online system.

You can decide how to best use the School Saving Bonus for your family's needs. You can choose how to allocate the \$400 in the online system.

The bonus can be used towards 2025 school costs, which may include:

- camps, trips, excursions and incursions
- swimming and sporting programs
- outdoor education programs
- graduations
- school uniforms
- textbooks.

The bonus can be used at your school's approved textbook or uniform suppliers either in-store or online, or through State Schools' Relief. The list of suppliers may include a school uniform or bookshop. Any amount that you choose to allocate to textbooks and uniforms will be valid until 30 June 2025. It will then transfer to your child's school account for future activities.

Funds will roll over for use in future years if it is not all spent in 2025.

### **Families with more than one eligible child**

Families who have more than one child at the same school can combine their School Saving Bonus payments to use on one child, or for a specific activity. So, for example, a family with 3 children who are all government school students would receive support to the value of \$1,200 and choose how they spend those funds. The School Saving Bonus cannot be combined across different schools.

### **More information**

To learn more about the School Saving Bonus visit [vic.gov.au/school-saving-bonus](https://vic.gov.au/school-saving-bonus). Translated information will also be available on the School Saving Bonus website in the next few weeks.

# STATE SCHOOLS' RELIEF

## 2025 Year 7 CSEF Uniform Package



**STATE  
SCHOOLS'  
RELIEF**

### ORDER FORM.

Applications for the 2025 Year 7 CSEF uniform package will open from Monday 7<sup>th</sup> October 2024 (beginning of Term 4, 2024).

**Please return forms to Warrnambool College by 8th November 2024**

### What you need to know.

#### Who is SSR?

State Schools' Relief is a not-for-profit organisation that works closely with all government schools across Victoria. Each year State Schools' Relief provides assistance to families experiencing financial disadvantage with school uniforms and footwear.

#### Introduction to Camps, Sports and Excursions Fund

Through government funding the Camps, Sports and Excursions Fund (CSEF) was established to provide payments for eligible students to attend camps, sports days and excursions. To find out more, or to apply for assistance, please refer to the Department of Education [website](#).

**SSR offers a uniform package every year to all Year 7 students eligible for CSEF funding.**

#### 2025 Year 7 Uniform Package for CSEF recipients

Year 7 students for 2025 that are recipients of the Camps, Sports and Excursion Fund (CSEF) automatically qualify for the uniform package and/or voucher.

#### What's in the package?

The 2025 package contains the following items:

**Outerwear x 1 pce** (i.e. puffer jacket)

**Top items x 2 pcs** (i.e. windcheater / polo shirt / rugby top / shirt / summer dress)

**Bottom items x 2 pcs** (i.e. pants / trackpants / trousers / shorts / skirts)

**Pair of Shoes x 1**

#### Please note:

- a) PE items are not included as part of this package
- b) Shoes must be requested in UK sizes (please see our shoe size conversion chart [here](#))

#### Cost to families

Where State Schools' Relief is unable to provide a uniform item directly that contains a logo (due to contractual agreements with uniform retailers) you will receive a **voucher for \$85** that subsidises the cost of the items. The voucher can be redeemed at your child's school uniform shop, or independent uniform retailer.

*Please note: vouchers do have an expiry date and must be used before this date.*

#### How do I apply for the CSEF Uniform Package?

Applications are made through your child's school. Please refrain from contacting State Schools' Relief directly as staff are unable to accept applications directly from parents/families. Should you have any questions, or wish to apply for assistance, please speak directly with your child's school.

#### How do I receive the uniform package?

All items and/or vouchers provided by SSR will be delivered directly to your child's school. The school will then contact you to arrange handover of these items and/or vouchers.

#### Please note:

Vouchers are not transferable and cannot be exchanged for cash. State Schools' Relief does not make cash payments to schools or parents/families.

### What you need to do.

Your child's school will be in contact with you regarding the 2025 uniform package.

Please fill out the 'Year 7 CSEF Uniform Package 2025 Order Form' and return it to the school in order for them to submit the application.



# STATE SCHOOLS' RELIEF

## 2025 Year 7 CSEF Uniform Package



### ORDER FORM.

Applications for the 2025 Year 7 CSEF uniform package will open from Monday 7<sup>th</sup> October 2024 (beginning of Term 4, 2024).

School Name: \_\_\_\_\_

Student Name: \_\_\_\_\_

Date of Birth: \_\_\_\_\_

### HOW TO USE THIS ORDER FORM

This form has been developed to assist schools with recording individual student uniform requirements. Please record the required sizes for your child and return this form to your child's school.

### SHOES

Please select **one** shoe type only. Speak with the school for assistance with sizing if required. There is a **shoe size conversion chart** available on our [website](#). Please indicate shoe size in the appropriate box below.

**Please note:** *There are no half sizes available.*

Shoe Type	UK Size
Darcy Lace Up	
Harper Lace Up	
T-Bars	
Sneaker Skate	
Sneaker Velcro	



Darcy



Harper



T-Bars



Sneaker Skate



Sneaker Velcro

### UNIFORM ITEMS

This year each student will receive one jacket, two tops items, two bottom items and one pair of shoes.

Please ensure that you list your child's required size next to the below item/s.

**Please note:** *PE items are not included as part of this package.*

Uniform items	Size
<b>Tops x 2 pcs</b> (i.e. windcheater / polo shirt / rugby top / shirt / summer dress)	
<b>Bottom items x 2 pcs</b> (i.e. pants / trackpants / trousers / shorts / skirts)	
<b>Outerwear x 1 pce</b> (i.e. puffer jacket)	

### IMPORTANT INFORMATION:

The uniform items provided as part of the package do not have a Warrnambool College Logo, they are generic items only. Where a school logo is essential, your child will be supplied with a voucher to the value of \$85 that can be used at Lowes Gateway Plaza, along with a pair of shoes if selected.

Parent/Guardian Signature: \_\_\_\_\_

Date: \_\_\_\_\_

Phone Number: \_\_\_\_\_



# STAFF CONTACTS

**Principal:**

David Clift

**Assistant Principals:**

Dan Lee

Emma Vesey

Jen Penn

**House Leaders:**

Belfast      Katie Crute

Childers     Rhonda Simmons

Flagstaff    Tom White

Hopkins     Hugh Richards

Logans      Julia Brain

Merri        Luke Howlett

**Business Manager:**

Chris Dickson

**School Payments:**

Katie Monigatti

**Transition:**

Emma Vesey

**SEAL Program:**

Jen Penn

**Sporting Pathways Program:**

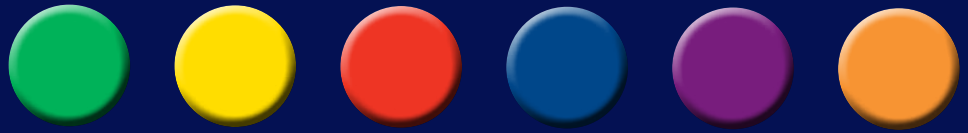
Dan Lee

**Disability Inclusion Leader:**

Anita Bounds

**Music Director:**

Erin Toulmin



**Warrnambool**  
COLLEGE

wblcoll.vic.edu.au  
03 5564 4444