



Information Night

Select Entry Accelerated Program


Year 7

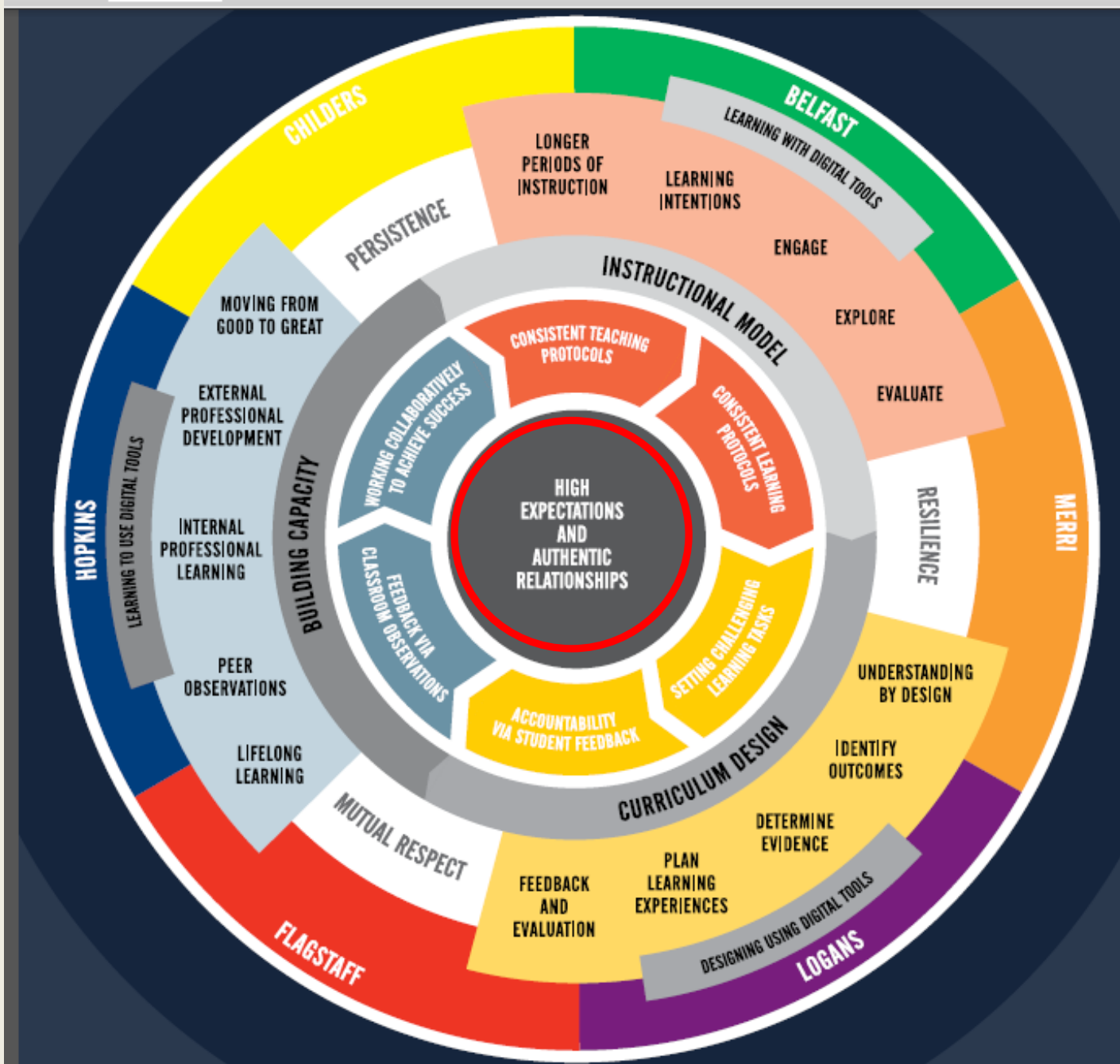
2019



Introducing

- Jen Penn, Leading Teacher Junior Curriculum

 - Mark O'Sullivan, SEAL Coordinator
- 





Myths surrounding Gifted Learners

- All students are gifted
- A gifted child must be gifted at everything
- Promoting giftedness promotes elitism
- It is always possible to close the '*Gap*' - the others will eventually catch up
 - provided we slow down the gifted students!
- These student will make it on their own



Intellectual Characteristics of Gifted Learners

- Ability to manipulate abstract symbols
- Higher level of concentration
- Well developed memory
- Early language interest and development
- Need for fast paced work
- Preference for independent work
- Curiosity and/or multiple interests
- Ability to generate original ideas



Emotional Characteristics of Gifted Learners



- Sense of humour
- High levels of energy
- Strong sense of justice and fairness
- Altruism, unselfishness and idealism
- Strong attachments and commitments
- Emotional intensity, empathy
- Perfectionism
- Preference for older friends
- Aesthetic sensitivity



Why Cater for Gifted Learners?

- To engage high achieving students
- To set appropriate expectations for **all students**
- To prevent underachievement and unnecessary misbehaviour
- To lift the glass ceiling
- To provide an environment for deep thinking and learning to occur
 - students *and* teachers



The Research

- Hattie effect size:
 - Acceleration of learning: 0.88
- Accelerate everyone, but need specific focus and challenges for gifted students
- Grouping gifted students provides best opportunities to achieve



Why SEAL Program for you?

- You enjoy being challenged
- You want your learning characteristics to be considered and utilised
- You like exploring issues and concepts with deep meanings
- You want to be surrounded by others who will push your learning to new personal bests
- You want more pathway options available in senior secondary



WHY SEAL @ WC?

- Only accredited SEAL school in S.W. Victoria
 - Continued accountability via accreditation
 - Rigorous selection process via HAST testing
- Part of SEAL network of schools
 - In Term 3, SEAL students in network gather together to complete gifted learning tasks
 - Sharing of curriculum resources and teacher PD
- Fifteenth year running the program
 - Constantly refining teacher selection, course structure and curriculum delivery



How does SEAL Work?

- First and Second year
 - Complete Victorian Curriculum for Year 7 to 9
 - In same class of SEAL students for all subjects
 - Set curriculum with exception of Year 9 Language
- Third year
 - Complete Victorian Curriculum for Year 10
 - In same SEAL class for all core subjects
 - Elective choices with other Year 10 students



How does SEAL Work?

- Fourth year
 - First year of VCE
 - Encouraged to complete Year 11 subjects or VCAL pathway
- Fifth year
 - Encouraged to complete mix of Year 11 and Year 12 subjects (or continue with alternate pathways)
- Sixth year
 - Encouraged to complete a number of Year 12 subjects, with possibility of University / folio subjects

Year 7 SEAL Course Structure

Yearlong subjects:

- 3 x English
- 3 x Maths
- 3 x Science
- 1 x Health
- 2 x Humanities
- 2 x PE
- 2 x Languages
- 1 x Visual Art

Semester length subjects:

- 1 x Drama
- 1 x Music
- 2 x Food Studies
- 2 x Digital Technology

How Does SEAL Compare

Year level	Year 7				Year 8			
Year level Theme	<u>iDiscover</u> <ul style="list-style-type: none"> Taste Confidence Friendships Values Connection to School				<u>iBelong</u> <ul style="list-style-type: none"> Respectful relationships Attitude Behaviours for success Voice Connection to Local Community			
Life Skills	Big Life link				Big Life link			
Timetable		Core	SEAL	SPP		Core	SEAL	SPP
	<u>Eng</u>	3	3	3	<u>Eng</u>	3	3	3
	Maths	3	3	3	Maths	3	3	3
	Sci	2	3	2	Sci	3	3	3
	Hums	2	2	2	Hums	3	3	3
	Language	2	2	2	Language	2	2	2
	PE	2	2		PE	2	2	
	Health	1	1					
	Vis Art	2	1	2	SPP			4
	SPP			4				
	<u>Semester:</u>				<u>Semester:</u>			
	Music	1	1		Vis Art	2	2	
	Drama	1	1		Woodwork	2	2	2
	Digital Tech	2	2	2	Health	2	2	
	Food Studies	2	2	2	Digital Tech	2	2	2
Camp and Link to Learning	Bacchus Marsh – Friendships and connection to cohort and school				Grampians – Altitude Days			



SEAL Applications

- Only students confirmed for enrolment at Warrnambool College can apply
- Welcome pack provided to parents from 9th August
 - Includes application forms for SEAL and scholarships
- Application for SEAL due by 20th August
- Externally assessed test on 30th August
- SEAL offers made at start of Term 4



SEAL applications

- Referral from Grade 5 or 6 teacher
- Parent Referral
- Self Referral
- Payment for HAST gifted learner testing
 - \$65 in 2018
- HAST test
 - Writing, Numeracy, Reading, Abstract Thinking
 - Not standardised test – focus on giftedness



SEAL classes



- Up to 25 students selected for SEAL Year 7 class in 2019
- Offers made - with a short waiting list in case students decline offers

Questions Now?

